

Case Study: St Andrew Square, Edinburgh

093/May17



Photo: Comprehensive Design Architects

Curtain walling and doors by Kawneer feature in Edinburgh's World Heritage Site

Architectural aluminium glazing systems by Kawneer were specified for St Andrew Square, a landmark office building in the Edinburgh New Town Conservation Area, on a prominent corner of the sensitive World Heritage Site, due to their ability to meet a diverse range of requirements.

Building: St Andrew Square

Location: Edinburgh

Architect: CDA (Comprehensive Design Architects)/Hoskins Architects

Main Contractor: Bowmer & Kirkland

Installer: Charles Henshaw & Sons

WWW.KAWNEER.CO.UK

 **KAWNEER**
AN ARCONIC COMPANY

Kawneer systems prove their adaptability

CDA (Comprehensive Design Architects) in conjunction with Hoskins Architects specified three types of Kawneer's curtain walling and two types of doors for the £42 million redevelopment of 3 to 8 St Andrew Square. The Kawneer AA@110 capped and SSG (Structurally Silicone Glazed) curtain walling with a 65mm sightline and a bespoke 80mm wide system, complemented by series 190 heavy-duty and 350 severe-duty commercial entrance doors, have been used on the offices on the second to sixth floors of number 6 and on some elements of the eight retail/restaurant units on the ground, first and basement floors of numbers 3 to 8. The development comprises 112,000ft² of Category A office space, now let in its entirety to Standard Life Investments, arranged around a full-height atrium, with roof terraces at the fourth and sixth floors, ground floor reception and double-height entrance on St Andrew Square, parking/bike storage at basement level and welfare facilities at lower ground floor.

Formerly the headquarters of the Scottish Provident Institution, the site had been developed in piecemeal fashion over the years, culminating in a series of interlinked buildings that were no longer fit for purpose. The poor-quality office space, in a prime city centre location, had lain empty for 12 years. The key aim was to create a sustainable future for the site which had been severely compromised prior to the redevelopment. The brief recognised the importance for the elevations to be of the highest architectural quality, to complement and stand alongside adjacent buildings surrounding the Square and beyond and to create economically-viable, high-quality Grade A office space. The building takes advantage of natural daylight and the spectacular views to the Castle, over St Andrew Square and to the Forth beyond by framing the views rather than creating vast expanses of glazing. Bronze feature picture windows and the Kawneer curtain walling mullions contrast visually with the background and frame the stunning views. Specialist sub-contractor Charles Henshaw & Sons were appointed by the client's team in 2008 for their façade knowledge and in conjunction with CDA and Gareth Hoskins Architects they addressed critical issues such as live load movement and deflection, resulting in the bespoke 80mm Kawneer system. After a two-year build by main contractor Bowmer & Kirkland, the site is now transformed, with the nine-storey building clad in stone and glass with bronze feature picture windows and bespoke Aurubis "bronze" metal fins attached to the curtain walling by Kawneer, part of the Arconic group.

CDA project director Gareth Thompson said: "The project required different types of curtain walling, capped and SSG, not to mention the bespoke fin caps. The adaptability of Kawneer's systems played a critical part in achieving the design and successfully resolving the complexities of the different types of curtain walling."

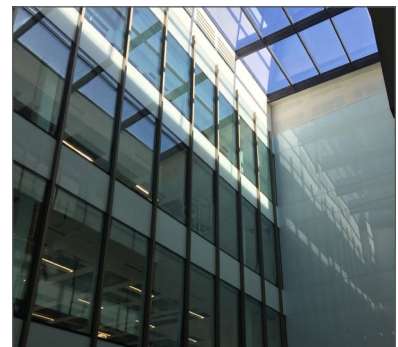
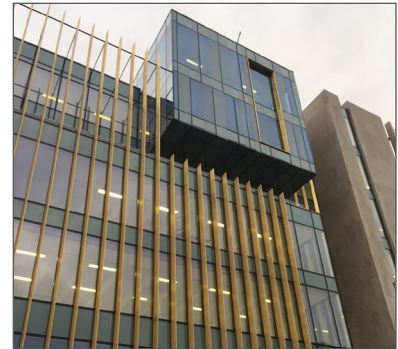
Henshaw deputy managing director Graham Chung said: "Kawneer were introduced to the project in 2008 as part of the Henshaw supply chain for their experience and ability to accommodate bespoke elements."

The bespoke metal fins attached to the Kawneer curtain walling were fabricated from a proprietary aluminium bronze flat sheet, Aurubis Nordic Royal, an alloy of copper with aluminium and zinc, with a rich golden through-colour. When viewed from straight-on the fins are almost invisible, allowing uninterrupted views in and out. When viewed from an increasing angle the visibility progressively closes up until completely blocked by the fins and the elevations appear solid. The appearance of the building continuously changes as you walk around it and will continue to do so with time as the fins develop a rich patina.

Please contact our Architectural Services Team if you have a project you would like to discuss: Tel: 01928 502604 / Email: kawneerAST@arconic.com

Kawneer UK Limited, Astmoor Road, Astmoor Industrial Estate, Runcorn, Cheshire WA7 1QQ
Tel: + 44 (0)1928 502500 Fax: + 44 (0)1928 502501

WWW.KAWNEER.CO.UK



Photos: Bowmer & Kirkland @bandkphoto